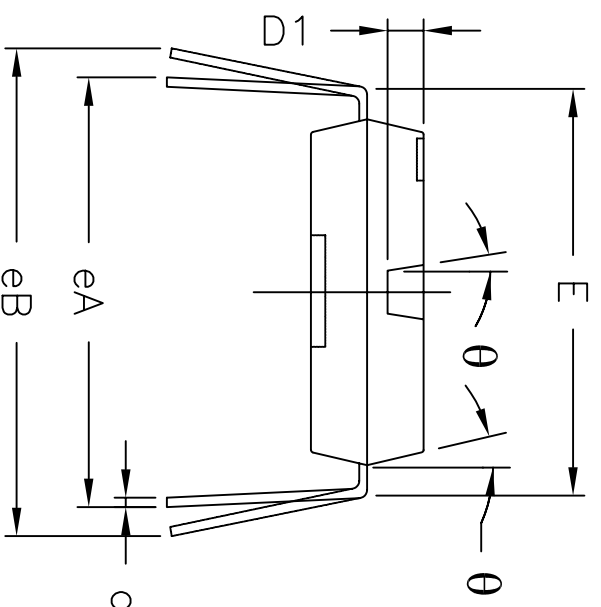
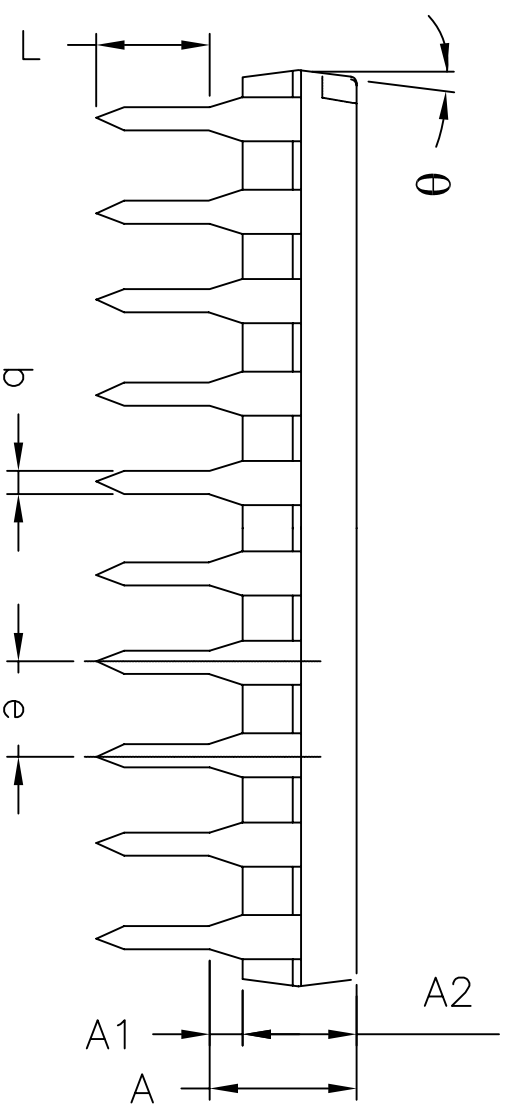
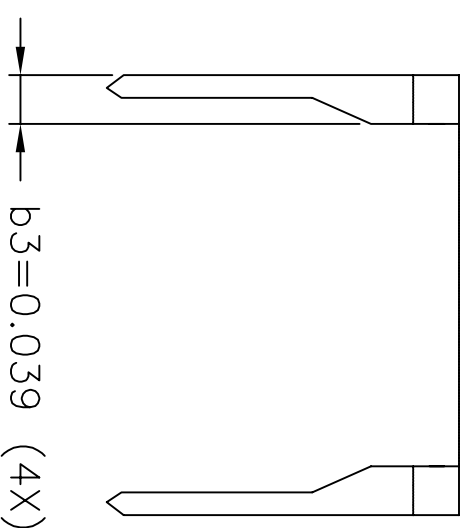
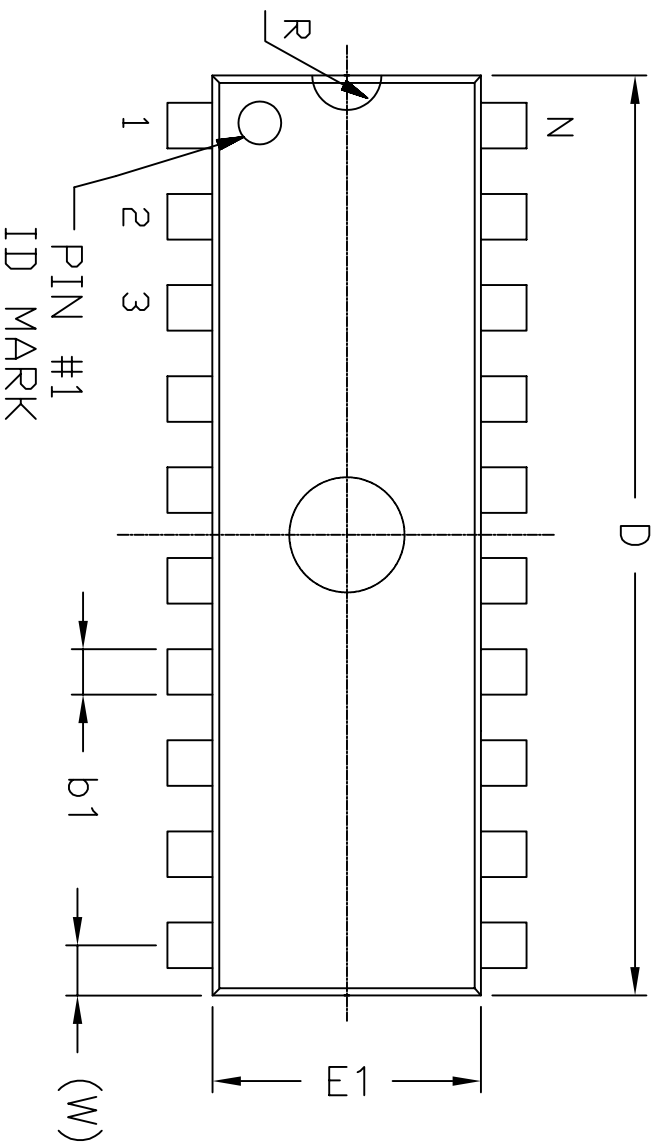


REVISION HISTORY				
REV.	DESCRIPTION	DATE	APP'D	
A	DRAWING ORIGINATION	04/26/06	JL	
B	CHANGE DRAWING LOGO AND COMPANY NAME	11/28/07	JL	

REMARKS:  
FOR 8LD AND 16LD  
ALL END LEADS (4X)  
ARE HALF LEAD TYPES



SYMBOLS	DIMENSIONS IN INCH (Control Unit)			DIMENSIONS IN MM (Reference Unit)		
	MIN	NOM	MAX	MIN	NOM	MAX
A	—	—	0.250	—	—	6.35
A1	0.015	—	—	0.39	—	—
A2	0.125	—	0.195	3.18	—	4.95
b	0.014	—	0.022	0.36	—	0.56
b1	0.030	—	0.070	0.77	—	1.77
c	0.008	—	0.015	0.20	—	0.36
D1	0.030	—	0.060	0.76	—	1.52
E	0.600	—	0.625	15.24	—	15.87
E1	0.485	—	0.580	12.32	—	14.73
e	0.100 BSC			2.54 BSC		
eA	0.600 BSC			15.24 BSC		
eB	—	—	0.700	—	—	17.78
L	0.115	—	0.200	2.93	—	5.08
W	0.075 REF			1.91 REF		
R	0.030 BSC			0.76 BSC		
theta	4°	7°	10°	4°	7°	10°
D	1.380	—	1.565	35.10	—	39.70
N	28			28		

		<b>EXAR CORPORATION</b>	
Packaging Approval:		Drawing No: 28-PIN PDIP	
By: JL	Date: 11/28/07	Revision: B	Sheet: 1 OF 1