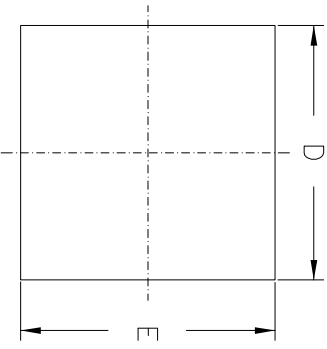
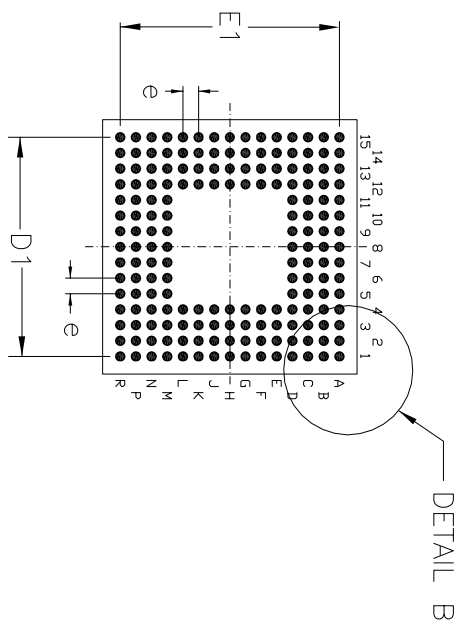


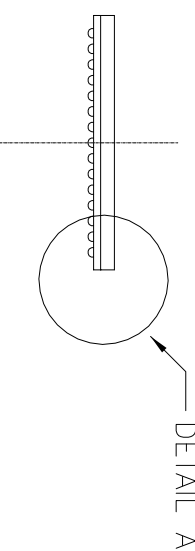
REVISION HISTORY			
REV.	DISCRIPTION	DATE	APP'D
A	DRAWING ORIGINATION	08/17/09	PC



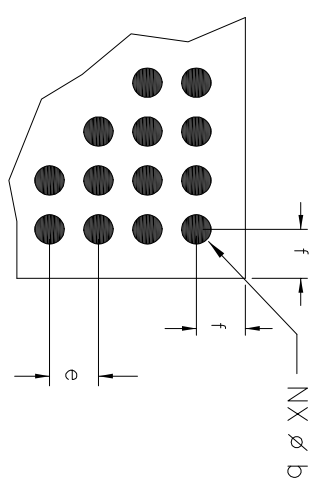
TOP VIEW



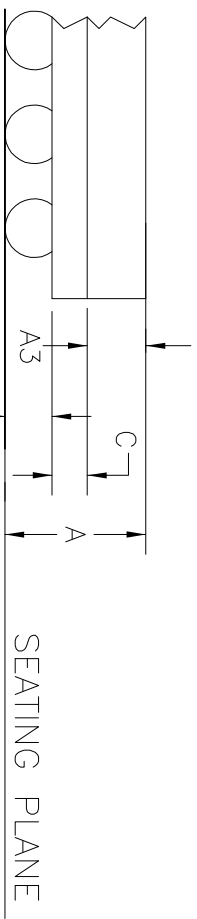
BOTTOM VIEW



SIDE VIEW



DETAIL B



DETAIL A

SYMBOLS	DIMENSIONS IN MM (Control Unit)			DIMENSIONS IN INCH (Reference Unit)		
	MIN	NOM	MAX	MIN	NOM	MAX
A	1.20	1.35	1.50	0.047	0.053	0.059
A1	0.25	0.30	0.35	0.010	0.012	0.014
A3	0.65	0.70	0.75	0.026	0.028	0.030
C	0.30	0.35	0.40	0.012	0.014	0.016
D	12.90	13.00	13.10	0.508	0.512	0.516
D1	11.20 BSC			0.441 BSC		
E	12.90	13.00	13.10	0.508	0.512	0.516
E1	11.20 BSC			0.441 BSC		
b	0.45	0.50	0.55	0.018	0.020	0.022
e	0.80 BSC			0.031 BSC		
f	0.80	0.90	1.00	0.031	0.035	0.039
M	15			15		
N	176			176		

NOTES: 'M' REPRESENTS THE BASIC BALL MATRIX SIZE.

		EXAR CORPORATION	
		176-BALL 13X13mm L-fpBGA PACKAGE OUTLINE	
Packaging Approval:		Drawing No: 176-BALL 13X13mm L-fpBGA	
By: PC	Date: 08/17/09	Revision: A	Sheet: 1 OF 1